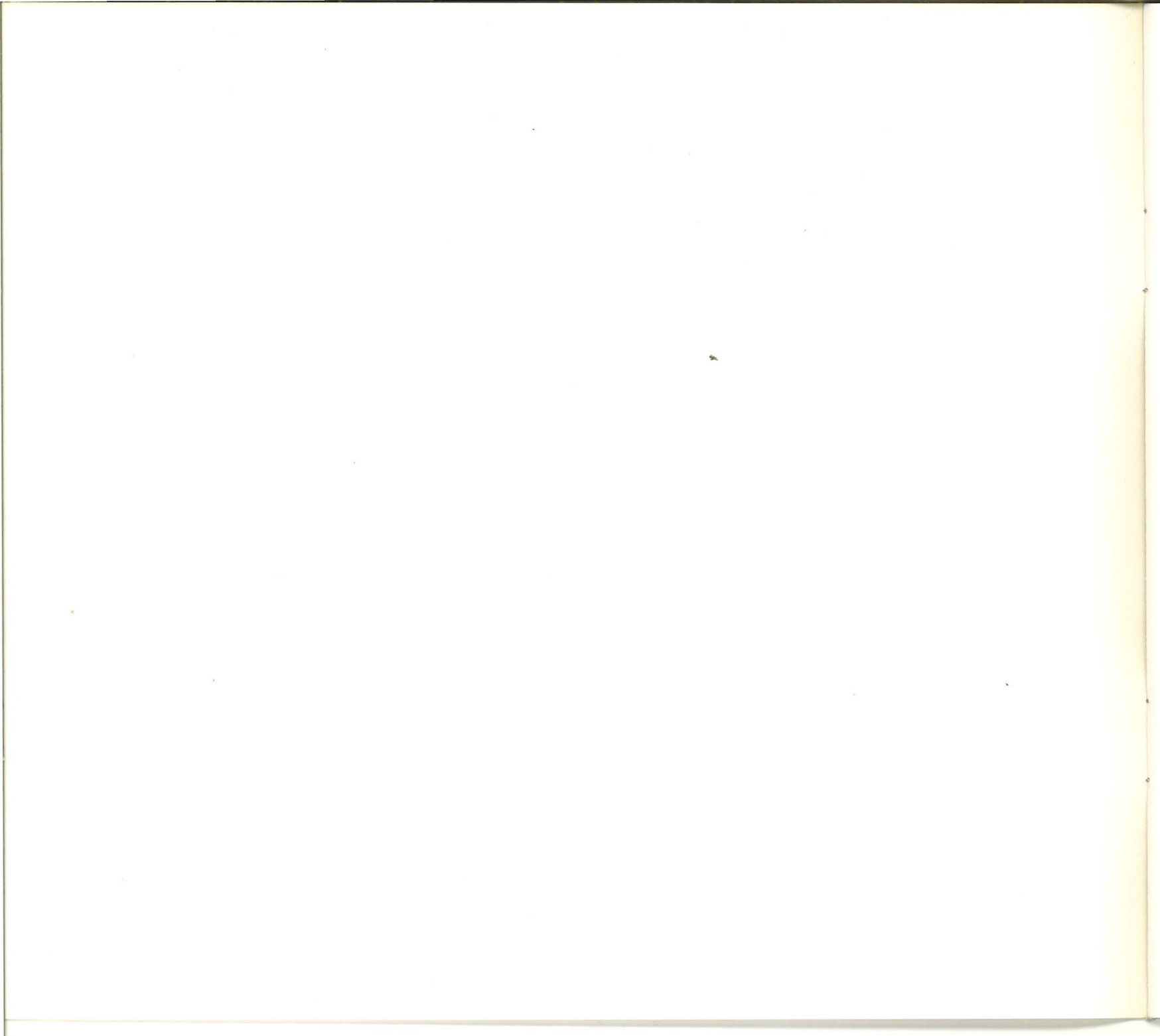




"A GIFT OF LOVE"



# "A GIFT OF LOVE"

**An Exhibition of Contemporary Pacific  
Northwest Art Selected from  
the gift of the Haseltine Family to the  
University of Oregon Museum of Art.**

**November 16 - December 21, 1975**

Funding for this catalogue  
made possible to the Museum  
by the Edna Pearl Horton  
Endowment Bequest.

Copyright© 1975, by the Museum of Art;  
University of Oregon, Eugene, Oregon



## A GIFT OF LOVE

For over a decade Virginia Haseltine has been a dedicated patroness and purposeful supporter of artists and craftspeople throughout the Northwest. Indeed, she alone is a pioneer in Oregon in reference to private and public financial patronage of the visual arts, as demonstrated by her invitation in 1966 to serve as a member of former Governor Hatfield's Planning Council on the Arts and Humanities from which the Oregon Arts Commission was created. Her complete involvement with this university and in particular the Museum of Art is almost legendary and dates back to 1955 when she organized a busload of Portland friends and alumni of this university for a combined Eugene/Portland gala and dinner at the museum to engender greater statewide interest and support. In the spring of 1964, Virginia, with Rolf Klep (distinguished artist, alumnus and art patron) and his dear late wife, Alice, toured the state pleading the cause of the visual arts in Oregon and in particular this art museum and its need for greater statewide assistance. A positive outcome was the establishment of this museum's Statewide Services Program, which received great impetus and support from Virginia in its formulative stages. Her initial Contemporary Northwest Collection was the first traveling exhibition organized and toured by Statewide Services throughout Oregon, thus, providing our first much needed statewide outreach program. From 1972 through 1974 over one hundred ninety-four traveling exhibitions and services and forty-one artist workshops were provided free or at nominal cost by this outstanding museum service throughout Oregon. Unique not only in the Northwest, our Statewide Services is a national model in providing visual art experiences to interested residents of this state and beyond. Yet another noteworthy beginning was the formulation of the Friends of the Museum, our supportive right arm. Virginia helped organize and served on its first Board of Governors.

The "Haseltine Collection" of three hundred ninety-three works, encompassing nearly every medium in the contemporary visual arts scene, forms the nucleus of what is now this museum's second largest collection numbering over nineteen hundred works of contemporary Northwest art and crafts. This nucleus collection and this exhibition were not gathered together by Virginia to present a definitive compendium of all present and past contemporary Northwest artists. They are, rather, evidence of one person's personal vision to stimulate and create a cultural renaissance of patronage through purchase of creative endeavors by gifted artists and draftspeople in Oregon and the Northwest. This endowed collection and exhibition then, is indeed A GIFT OF LOVE -- a major gift assembled and given to this museum and university in the dawn of its Centennial celebration. The givers are not only Virginia and



her supportive husband, Bill, but the entire talented Haseltine family (many of them university graduates) spanning two generations. This GIFT OF LOVE is given by an Oregon family. It is one for which this museum, the University of Oregon, and I personally will be forever grateful.

Richard C. Paulin, Director  
University of Oregon Museum of Art

## "ALL ART IS LOVE"

Working with the Museum of Art at the University of Oregon has been a most exciting living-and-learning experience for me. From my arts notebook I have learned that the words of Samuel Miller, then Dean of Harvard Divinity School, spoke the truth when he wrote in 1955, "All art is love, waiting upon the world, not to copy the world but to disclose the secret of it in moments when man's passionate concern is united with the soul of its beauty." I now accept his philosophy.

The "Haseltine Collection" is not a collection in the usual sense...but is more the evidence of an idea...a desire to create a cultural milieu of patronage and purchase for talented members of our own State and of the Pacific Northwest region.

The seedling collection was given to the Museum of Art at Eugene in order to be circulated to small communities which lacked resources in visual arts. We chose to work with this then unnoticed and unfashionable museum because it is the only State-owned museum dedicated to the enhancement of the fine arts. Because it is located at the University of Oregon campus, which holds a college of Architecture and Allied Arts, we hoped that it would initiate a strong arts education program. The museum, with the continuing support of its directors, the University administration, and the Friends of the Museum, has done just that.

The program has led me into a splendid association with the museum, which, like the artists and craftsmen as necessary creative forces in our community, had long been unattended, not generally appreciated, and had gone underfinanced.

I believe, in our push-button technological society at this time of the Bicentennial celebration in our U.S. history, that it is necessary for educational institutions to strengthen their curricula in the arts, and in the allied fields of the humanities and social sciences, if our people are to survive creatively in this soul-sucking society. This, in essence, was the intent of the gift of the "Haseltine Collection."

The collection embraces a transitional period in Oregon art history reflecting World War II and its post-war years. Artists and craftsmen of our region were striving for their own unique expressions...were reflecting the confusional impacts of European and New York innovators and were reacting to social forces. From the Oriental and Asiatic influences came a renewal of interest in the perfection of techniques, a reflection of religion and philosophy along with a responsiveness to nature. Our artists were also conditioned by

indigenous cultures of the American Indian and by a peculiar quality of light which stirs the spirit and spurs the creative mind. Unique colors and forms emerge... the colors of decaying forests which are born, grow, and die in the rains, together with numinous fusion of sky and sea, all blending with mythic commentary on the spiritual truths as they affect our twentieth century living in the last vast and uncluttered area of our nation.

The joy of the experience has been enhanced during the years of working with educators and following the progress of the artists and craftsmen. An illuminating statement of truth was given to me by the artist, Morris Graves, who said, "The artist is only half the canvas; the viewer must respond."

Virginia Haseltine

# THE HAZELTINE COLLECTION OF PACIFIC NORTHWEST ART: CATALOG LISTING

(Height measurement precedes width.)

- ANONYMOUS COLUMBIA RIVER INDIAN CARVER.
1. **Ram's Head Carving.** Sandstone. ca. 1800 A.D.  
H: 8¼ inches. 74:31.67
- ANONYMOUS PHOTOGRAPHER.
2. **Portrait photograph of the artist, James McClintock.**  
Black and white. ca. 1965.  
13¾ ins. x 8 1/8 ins. 74:31.137
- GUY ANDERSON (b. 1906)
- 3. **Purification Rite.** Oil on canvas. 1960.  
78 ins. x 41 3/8 ins. 71:4.22
  - 4. **Guardians of the Fishing Fleet.**  
Mixed media painting. 1964.  
15 ins. x 40 ins. 71:4.16
  - 5. **Guardians of the Symbol.** Mixed media painting. 1964.  
8½ ins. x 21 ins. 72:1.45
  - 6. **Man and Space Machine.** Mixed media painting.  
23 ins. x 9 ins. 75:3.1
- RUDY AUTIO (b. 1926)
- 7. **Indian Chieftain.** Terra cotta sculpture. 1952.  
H: 28 inches. 70:16.54
- JAY BACKSTAND (b. 1936)
8. **Rug II.** Oil on canvas. 1964.  
48 ins. x 36 3/8 ins. 72:1.36

• indicates works in exhibit.



- 7.  
RUDY AUTIO (b. 1926)  
**Indian Chieftain.**  
Terra cotta sculpture. 1952.  
H: 28 inches.  
70:16.54



- |                          |  |           |
|--------------------------|--|-----------|
| 9.                       | <b>Untitled Figure Drawing.</b> Graphite. 1965.<br>19 ins. x 24 ins.                           | 74:31.88  |
| 10.                      | <b>Untitled Figure Drawing.</b> Graphite. 1965.<br>19 ins. x 24 ins.                           | 74:31.89  |
| 11.                      | <b>The Growing.</b> Oil on canvas. 1966.<br>68 ins. x 58 ins.                                  | 72:1.38   |
| 12.                      | <b>JBL #4.</b> Oil on canvas. 1967<br>60 1/4 ins. x 58 1/2 ins.                                | 73:4.1    |
| 13.                      | <b>JBL #10.</b> Oil on canvas. 1967.<br>58 1/4 ins. x 50 1/2 ins.                              | 73:4.2    |
| • 14.                    | <b>JBL #17.</b> Oil on canvas. 1967.<br>85 ins. x 66 1/2 ins.                                  | 73:4.7    |
| VIRGINIA BANKS (b. 1920) |  |           |
| • 15.                    | <b>Portals to the City.</b><br>Casein and watercolor on film. 1965.<br>8 3/4 ins. x 7 1/4 ins. | 74:31.32  |
| EUGENE BENNETT (b. 1921) |  |           |
| 16.                      | <b>Still Life.</b> Watercolor on paper. 1948.<br>18 3/8 ins. x 14 3/8 ins.                     | 70:16.31  |
| 17.                      | <b>Woman's Head.</b> Watercolor on paper. 1948.<br>20 1/2 ins. x 14 1/4 ins.                   | 74:31.194 |
| 18.                      | <b>Head of a Clown.</b> Watercolor and oil<br>on paper. 1953.<br>24 ins. x 18 ins.             | 74:31.85  |
| 19.                      | <b>Assemblage.</b> Mixed media painting. 1966.<br>15 1/2 ins. x 10 1/2 ins.                    | 75:3.8    |
| • 20.                    | <b>Untitled City Landscape.</b> Watercolor<br>10 3/4 ins. x 13 3/4 ins.                        | 74:31.84  |

• indicates works in exhibit.

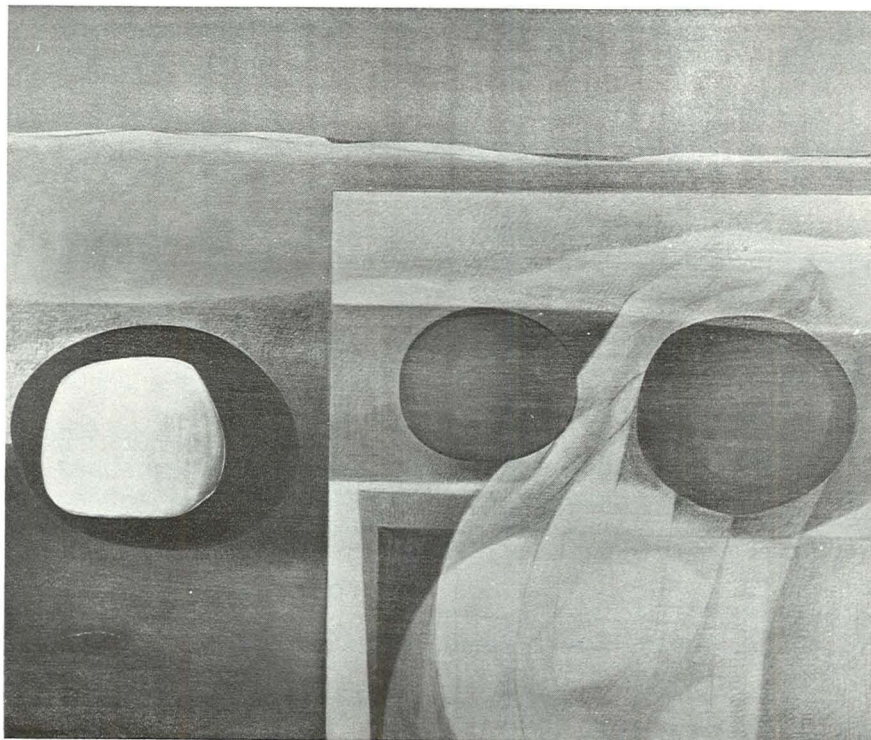
21. DON BERRY (b. 1931)  
**Hornet.** Brush and ink on paper. 1957.  
10 ins. x 5¾ ins. 74:31.23
22. MURIAL BLOCKER  
**Untitled Still Life Sketch with Jug.**  
Mixed media painting.  
34½ ins. x 25½ ins. 74:31.152
- 23. TOM BLODGETT (b. 1940)  
**Untitled.** India ink and graphite on paper.  
13 7/8 ins. x 16 5/8 ins. 73:4.12
24. EDGAR BOHLMAN (1902-1957)  
**Cabaret in Rabat, Morocco.**  
Pen and ink with watercolor. 1934.  
19 1/8 ins. x 24 ins. 71:4.4
25. **Casablanca Clown.** Watercolor. 1938.  
17 3/8 ins. x 12 ins. 74:31.58
26. ROBERT BOSWORTH (b. 1933)  
**Elegy.** Watercolor. 1962.  
38 ins. x 48 ins. 70:18.1
27. LOUIS BUNCE (b. 1907)  
**Images.** Serigraph. 1946. (Ed. 30)  
8 ins. x 13 ins. 71:4.31
28. **Bay View.** Gouache. 1950.  
23 ins. x 17 ins. 71:4.15
- 29. **Pacific Shores.** Serigraph. 1957.  
24 ins. x 16 5/8 ins. 70:18.2
30. **Presence.** Collage. 1962.  
68 ins. x 53 3/8 ins. 70:16.18
31. **Noon.** Drawing. 1963.  
8 ins. x 13 ins. 71:4.29

• indicates works in exhibit.

- |                            |  |           |
|----------------------------|--|-----------|
| • 32.                      | <b>Dream.</b> Oil on canvas. 1964.<br>40 ins. x 48 ins.  | 71:4.5    |
| 33.                        | <b>Untitled.</b> Color lithograph. (No. 1/20)<br>14 5/8 ins. x 17 5/8 ins.                         | 70:16.32  |
| KENNETH CALLAHAN (b. 1906) |  |           |
| 34.                        | <b>Untitled.</b> Watercolor. 1935.<br>16 3/4 ins. x 21 5/8 ins.                                    | 71:4.36   |
| 35.                        | <b>The Prophet.</b> Mixed media drawing. 1955.<br>6 7/8 ins. x 13 3/8 ins.                         | 74:31.36  |
| 36.                        | <b>Flies.</b> Ink wash. 1963.<br>22 1/2 ins. x 28 3/8 ins.   | 71:4.38   |
| 37.                        | <b>Frog.</b> Gouache and ink on paper. 1965.<br>23 ins. x 30 1/4 ins.                              | 71:4.37   |
| • 38.                      | <b>Shore Series #2.</b> Tempera. 1966.<br>17 1/2 ins. x 23 1/2 ins.                                | 74:31.13  |
| 39.                        | <b>Desert Landscape.</b> Oil. ca. 1960.<br>13 ins. x 16 1/2 ins.                                   | 70:16.33  |
| 40.                        | <b>Old Cannery, Ilwaco.</b> Ink and wash drawing. 1964.<br>18 ins. x 23 7/8 ins.                   | 71:4.39   |
| 41.                        | <b>Quest.</b> Oil on canvas. 1946.<br>28 1/2 ins. x 44 1/2 ins.                                    | 70:16.3   |
| ROCKWELL CAREY (b. 1882)   |  |           |
| 42.                        | <b>Portrait Sketch of C.S. Price.</b> Pencil drawing.<br>9 1/2 ins. x 7 5/8 ins.                   | 74:31.155 |
| JAMES CASTLE               |  |           |
| 43.                        | <b>Letters on the Wall.</b> Watercolor and<br>charcoal on paper. ca. 1960.<br>6 1/4 ins. x 15 ins. | 74:31.73  |

- indicates works in exhibit.





- 32.  
LOUIS BUNCE (b. 1907)  
**Dream.** Oil on canvas. 1964.  
40 ins. x 48 ins.  
71:4.5

- |                            |  |          |
|----------------------------|--|----------|
| 44.                        | <b>Totems.</b> Chalk and watercolor on paper.<br>8 ins. x 11 ins.  | 74:31.72 |
| RAY CHILDSTROM (b. 1925)   |  |          |
| 45.                        | <b>The Critics.</b> Serigraph. 1952.<br>8 ins. x 10½ ins.  | 70:18.3  |
| MARK CLARKE (b. 1935)      |  |          |
| • 46.                      | <b>Land Stripe.</b> Collage. 1975.<br>24 ins. x 36 ins.  | 75:15    |
| ROBERT COLESCOTT (b. 1925) |  |          |
| • 47.                      | <b>Nude.</b> Oil on canvas. 1962.<br>30 ins. x 20 ins.   | 70:16.34 |
| WILLIAM CUMMING (b. 1917)  |  |          |
| • 48.                      | <b>Illiad Fragment: Achilles and Patroclus.</b><br>Oil on composition board. 1965.<br>35 9/16 ins. x 47 15/16 ins. | 66:26.1  |
| WALTER DAGGETT (b. 1950)   |  |          |
| 49.                        | <b>Clatsop County Head.</b> Watercolor. 1968.<br>15 ins. x 22½ ins.  | 74:31.80 |
| MARY DAVIS (b. 1907)       |  |          |
| • 50.                      | <b>Skidmore Fountain.</b> Oil on canvas board. 1953.<br>16 ins. x 20 ins.  | 70:16.19 |
| RICHARD DAVIS (b. 1931)    |  |          |
| 51.                        | <b>Horse in Moonlight.</b> Oil on canvas. ca. 1960.<br>52 ins. x 39½ ins.  | 70:16.12 |
| AL EVERETT (1917-1965)     |  |          |
| 52.                        | <b>Nocturnal Longing.</b> Mixed media painting. 1964.<br>39 9/16 ins. x 31 ¾ ins.                                  | 70:4.24  |
| ROBERT FEASLEY (b. 1926)   |  |          |
| 53.                        | <b>Palousean Village.</b> Oil on canvas. 1963.<br>48 ins. x 38 ins.  | 70:18.4  |

• indicates works in exhibit.

54. **Conversation in Early Winter** Oil on canvas. 1964.  
48½ ins. x 44 ins. 71:4.13
- BETTY FEVES (b. 1918)
- 55. **Figure Group.** Terra cotta sculpture. 1958.  
H: 20 inches. 70:18.5
56. **Figure Group II.** Terra cotta sculpture. ca. 1958.  
20½ ins. x 11 ins. 74:31.41
- RUTH FLUNO (b. 1923)
57. **Unto Us Is Given Grace.** Collage. 1964.  
40 ins. x 40 ins. 71:4.11
- ROBERT FLYNN
- 58. **Landscape with Figures.** Metal and  
ceramic sculpture. ca. 1955.  
8½ ins. x 9½ ins. x 3 ins. 74:31.39
59. **Storm Coming.** Oil on board. 1961.  
27½ ins. x 24 ins. 74:31.8
- OTTO FRIED (b. 1922)
- 60. **Man in Landscape.** Oil on canvas. 1967.  
38¼ ins. x 77½ ins. 73:4.3
- BERT GARNER (b. 1940)
61. **Hybrid.** Serigraph. 1962. (Ed. 7/16)  
7 3/8 ins. x 7 ¾ ins. 74:31.78
62. **Fleeing Still Life.** Serigraph. 1963.  
16 ins. x 26 ins. 71:4.30
- JONN GEISE (b. 1936)
63. **Circum Octo [maquette for].** Metal construction.  
1964. H: 7½ inches. 74:31.51

- PAUL GEORGES (b. 1923)
- 64. **Ocean at Safeport.** Oil on canvas.  
24 ins. x 36 ins. 74:31.18
- GORDON GILKEY (b. 1912)
- 65. **Indian Calligraphic Head.** Mixed media,  
color intaglio. 1956. (Ed. 1/10)  
24 ins. x 18 ins. 70:16.35
  - 66. **August Hood.** Intaglio.  
6¾ ins. x 11¾ ins. 74:31.77
  - 67. **Formations.** Etching. 1950.  
15 ins. x 17½ ins. 70:16.36
  - 68. **Slow Burn.** Etching. 1961.  
17½ ins. x 21½ ins. 70:16.37
- RICHARD GILKEY (b. 1925)
- 69. **Evening Landscape.** Oil on canvas. 1966.  
50 ins. x 60 ins. 71:4.20
  - 70. **August Bloom.** Oil on masonite. 1971.  
28 ins. x 42 ins. 74:31.2
  - 71. **Landscape #5.** Oil on canvas board. n.d.  
12 ins. x 17 ins. 74:31.26
- WILLIAM GIVLER (b. 1906)
- 72. **Untitled.** Ink and varnish on paper. ca. 1935.  
12 9/16 ins. x 19 ins. 71:4.34
  - 73. **Beach Grasses.** Lithograph. ca. 1970.  
10 3/8 ins. x 14 3/8 ins. 74:31.71
  - 74. **Deep Forest.** Lithograph. 1963.  
13 ins. x 10¾ ins. 70:18.7
  - 75. **Evening.** Lithograph. ca. 1960.  
10½ ins. x 14¼ ins. 70:18.6

• indicates works in exhibit.





- 64.  
PAUL GEORGES (b. 1923)  
**Ocean at Safeport.** Oil on canvas.  
24 ins. x 36 ins.  
74:31.18

- 76.       **Girl by the Sea.** Transfer lithograph. 1952.  
11½ ins. x 17 ns. 70:16.38
  
- ALBERT GOLDSBY (b. 1930)
- 77.       **October Day.** Watercolor. 1962.  
16 ins. x 20 ins. 70:16.39
  
- 78.       **Torso in Bronze [Belle].** Metal construction. 1963.  
H: 38 inches. 71:4.1
  
- 79.       **S.F. [standing figure].** Metal construction. n.d.  
H: 42½ inches. 74:31.20
  
- MORRIS GRAVES (b. 1910)
- 80.       **The Prodigal Son.** Tempera on paper. 1936.  
12¾ ins. x 17 3/16 ins. 65:26.2
  
- 81.       **Effort to Bloom.** Tempera on rice paper. 1943.  
28 5/8 ins. x 23 5/8 ins. 75:3.25
  
- 82.       **Journey III.** Watercolor. 1943.  
19 ins. x 29½ ins. 75:3.7
  
- 83.       **Crane with Void.** Tempera on paper. 1945.  
20¾ ins. x 14¾ ins. 75:3.23
  
- 84.       **Letter to Dorothy Schumacher (The Message).**  
Tempera and gilt on paper. 1946. 43 ins. x 25 ins. 65:26.1
  
- 85.       **Indian Bird.** Watercolor on paper. 1950.  
18 7/8 ins. x 11 1/8 ins. 75:3.22
  
- 86.       **Winter Flower.** Watercolor on paper. 1954.  
7 ins. x 9½ ins. 75:3.4
  
- 87.       **Deep Water [Minnow].** Tempera on rice  
paper. 1957. 17½ ins. x 27½ ins. 75:3.24
  
- 88.       **Minnow.** Tempera on paper with chalk. 1967.  
7½ ins. x 8¼ ins. 75:3.2

• indicates works in exhibit.



- 88.  
MORRIS GRAVES (b. 1910)  
**Minnow.**  
Tempera on paper with chalk. 1967.  
7½ ins. x 8¼ ins.  
75:3.2

- RAY GRIMM (b. 1924)
89. **Torso vase.** Glazed stoneware. n.d.  
8 1/4 ins. x 6 ins. x 4 1/2 ins. 74:31.44
- ERIK GRONBORG (b. 1934)
- 90. **Untitled, No. 26 — "Miss Liberty".**  
Glazed ceramic sculpture. 1969.  
H: 13 3/4 inches. Greatest diameter: 8 inches. 73:4.8
- RUTH GROVER (b. 1912)
91. **Symphony.** Watercolor. n.d.  
20 ins. x 14 ins. 72:1.41
- JAMES H. HALES (b. 1928)
92. **Triton.** Mixed media sculpture. n.d.  
19 ins. x 10 1/2 ins. 74:31.49
- ARTHUR HANSEN (b. 1929)
93. **Woodcutter.** Oil on canvas. 1958.  
31 5/8 ins. x 27 3/4 ins. 71:4.23
94. **Untitled Landscape.** Dry point etching. 1958  
(Ed. 3/10) 8 1/2 ins. x 5 1/8 ins. 74:31.29
95. **Untitled.** Dry point etching. 1958. (Ed. 5/7)  
3 7/8 ins. x 6 1/4 ins. 74:31.28
96. **Untitled Crucifixion Scene.** Etching. 1958.  
(Ed. 11/12) 9 1/4 ins. x 11 3/4 ins. 74:31.56
97. **The Homesteader.** Oil on canvas. 1962.  
37 ins. x 40 ins. 71:4.14
98. **Tree.** Ink on paper. 1963.  
14 ins. x 22 ins. 71:4.7
99. **Zarth.** Ink on paper. 1964.  
20 1/4 ins. x 29 1/4 ins. 71:4.6

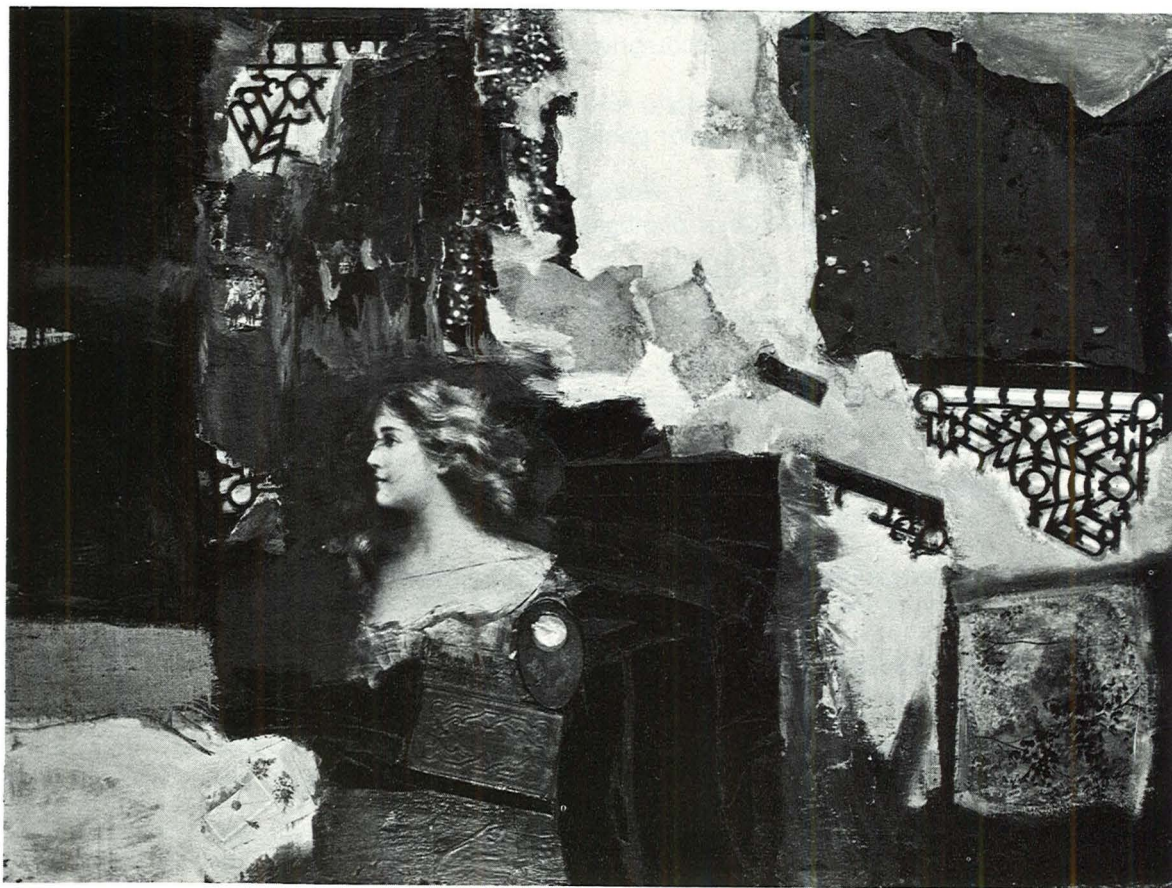


- 90.  
ERIK GRONBORG (b. 1934)  
**Untitled, No. 26—"Miss Liberty".**  
Glazed ceramic sculpture. 1969.  
H: 13¾ ins. Greatest diameter: 8 ins.  
73:4.8



- JAMES LEE HANSEN (b. 1925)
- 100. **Clan Dancer #2.** Cast bronze. 1961.  
H: 17 inches. W: 9¼ inches. 74:31.50
- TOM HARDY (b. 1921)
- 101. **Kingfisher and Fish.** Brush and ink on paper. 1953.  
8¾ ins. x 15¾ ins. 70:16.40
  - 102. **Goats and Log.** Steel construction. 1962.  
51¼ ins. x 26¼ ins. 73:4.9
  - 103. **Meadow with Ferns.** Watercolor. 1962.  
11¼ ins. x 29 ins. 70:18.9
  - 104. **Wasps and Nest.** Brush and ink on paper. 1962.  
22½ ins. x 15½ ins. 70:18.8
  - 105. **Flying Horse.** Welded steel. 1958.  
36 ins. x 54 ins. 70:16.10
  - 106. **Grebes.** Brush and ink on paper.  
15 ins. x 22 ins. 74:31.87
  - 107. **Miscellaneous sketches.** Mixed media drawings.  
Measurements vary. 70:16.15 a-k
  - 108. **Two Horses [proof].** Dry point etching. n.d.  
9.8 ins. x 11.7 ins. 74:31.59
- JAMES HASELTINE (b. 1924)
- 109. **Regatta.** Oil on canvas. 1951.  
18 ins. x 22 ins. 73:4.11
  - 110. **Mountain Sheep.** Crayon rubbing on paper.  
7 5/8 ins. x 8¼ ins. 74:31.33
- MAURY HASELTINE (b. 1925)
- 111. **Delphiniums.** Collage. ca. 1965.  
40¼ ins. x 54¼ ins. 74:31.1

• indicates work in exhibit.



- 111.  
MAURY HASELTINE (b. 1925)  
**Delphiniums.** Collage. ca. 1965.  
40¼ ins. x 54¼ ins.  
74:31.1



THOM HASELTINE (b. 1951)

- |        |   |           |
|--------|---|-----------|
| 112.   | <b>Embracing Sun.</b> Color photograph. 1970.<br>14 ins. x 11 ins.                    | 74:31.166 |
| 113.   | <b>Abstract Weed Pods.</b> Color photograph. 1972.<br>11 ins. x 14 ins.               | 74:31.164 |
| 114.   | <b>Bridge at Sunrise.</b> Color photograph. 1972.<br>14 ins. x 11 ins.                | 74:31.188 |
| 115.   | <b>Cactus.</b> Color photograph. 1972.<br>14 ins. x 11 ins.                           | 74:31.186 |
| 116.   | <b>Cosmic Landing.</b> Color photograph. 1972.<br>11 ins. x 14 ins.                   | 74:31.171 |
| 117.   | <b>Cracks.</b> Color photograph. 1972.<br>11 ins. x 14 ins.                           | 74:31.190 |
| 118.   | <b>Fort Lawton Beach Scene.</b> Color photograph. 1972.<br>14 ins. x 11 ins.          | 74:31.165 |
| 119.   | <b>Frog.</b> Color photograph. 1972.<br>11 ins. x 14 ins.                             | 74:31.189 |
| 120.   | <b>Insect on Rose.</b> Color photograph. 1972.<br>11 ins. x 14 ins.                   | 74:31.184 |
| 121.   | <b>Pasture at Dawn.</b> Color photograph. 1972.<br>11 ins. x 14 ins.                  | 74:31.170 |
| 122.   | <b>Sandman.</b> Color photograph. 1972.<br>14 ins. x 9½ ins.                          | 74:31.185 |
| 123.   | <b>Water Patterns.</b> Color photograph. 1972.<br>11 ins. x 14 ins.                   | 74:31.163 |
| • 124. | <b>The Collector.</b> Color photograph. 1973.<br>14 ins. x 11 ins. (Cover photograph) | 74:31.167 |

• indicates works in exhibit.

- |                          |  |           |
|--------------------------|--|-----------|
| 125.                     | <b>Pier 54.</b> Color photograph. 1973.<br>9½ ins. x 14 ins.                                     | 74:31.191 |
| 126.                     | <b>Silver Marsh.</b> Color photograph. 1973.<br>9 7/8 ins. x 14 ins.                             | 74:31.169 |
| 127.                     | <b>Coeur D'Alene Meadow.</b> Color photograph.<br>9 1/8 ins. x 14 ins.                           | 74:31.168 |
| 128.                     | <b>Temporal Expansion Mechanism.</b> Color photograph.<br>9½ ins. x 13 15/16 ins.                | 75:3.20   |
| 129.                     | <b>Weed Among Grass.</b> Color photograph.<br>11 ins. x 14 ins.                                  | 74:31.187 |
| CHARLES HEANEY (b. 1897) |  |           |
| 130.                     | <b>Untitled Landscape.</b> Oil on composition board.<br>n.d. (early work) 10 1/8 ins. x 15¾ ins. | 74:31.70  |
| 131.                     | <b>Village.</b> Linocut. ca. 1925.<br>4¼ ins. x 6¼ ins.  | 72:1.26   |
| 132.                     | <b>Spring in the Cascades.</b> Woodcut. 1938.<br>6 11/16 ins. x 9 ins.                           | 72:1.27   |
| 133.                     | <b>Rest in the Woods.</b> Aquatint. 1940.<br>5 7/8 ins. x 8 11/16 ins.                           | 72:1.19   |
| 134.                     | <b>Tree Group.</b> Dry point etching. 1940.<br>5½ ins. x 7 7/8 ins.                              | 72:1.25   |
| 135.                     | <b>Clam Girl.</b> Oil on masonite. early 40's.<br>30 ins. x 15 ins.                              | 71:4.26   |
| 136.                     | <b>Cacti.</b> Aquatint and spirit ground. 1941.<br>12 15/16 ins. x 10 1/8 ins.                   | 72:1.21   |
| • 137.                   | <b>Undersea Forms.</b> Aquatint. 1941.<br>6 7/8 ins. x 10¼ ins.                                  | 72:1.23   |

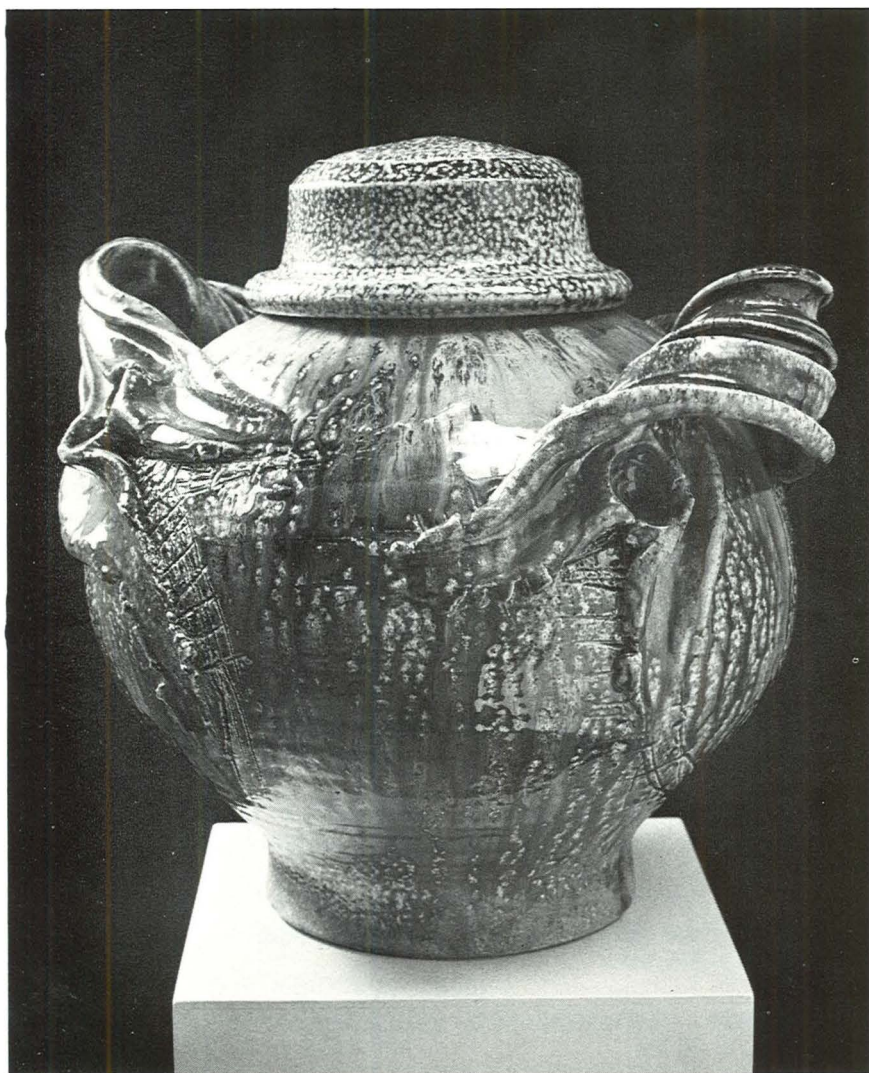
• indicates works in exhibit.



- 138.     **Ancestor.** Tempera on masonite. 1943.  
28 ins. x 40 ins. 70:18.10
- 139.     **Aquarium.** Aquatint. 1946.  
6¾ ins. x 10½ ins. 72:1.22
- 140.     **Fish and Sponges.** Aquatint. 1946.  
6 3/8 ins. x 4 15/16 ins. 72:1.24
- 141.     **The Net.** Aquatint. ca. 1953.  
8 5/8 ins. x 11½ ins. 72:1.28
- 142.     **Tide Pools.** Aquatint. 1953.  
4 ins. x 6¾ ins. 72:1.20
- 143.     **The Old Order Changeth.** Oil on masonite. 1954.  
36 ins. x 48 ins. 70:16.4
- 144.     **Silver Camp [early spring].** Oil on canvas.  
ca. 1960. 15 ins. x 30 ins. 74:31.11
- 145.     **Woman Alone.** Oil on board. 1966.  
24¼ ins. x 44 ins. 74:31.16
- 146.     **Five Sketches, Buildings.** Pencil. ca. 1950.  
Measurements vary. 70:16.27 a-e
- 147.     **Folio of 31 Sketches.** Mixed media.  
Measurements vary. 72:1.29
- 148.     **Sketch for "Front Street Building".** Pencil.  
ca. 1950. 11 7/8 ins. 17 7/8 ins. 70:16.29
- FREDERIC H. HEIDEL (b. 1915)
- 149.     **Columbia Landscape.** Watercolor. 1962.  
11½ ins. x 22½ ins. 70:16.41
- J. HIBBARD.
- 150.     **Dollhouse.** Etching. 1969. (Ed. 6/30)  
Diameter: 6 1/8 inches. 74:31.82

• indicates works in exhibit.

- VIRGINIA HIXSON.
151. **Candle Holder.** Raku ware. n.d.  
9 ins. x 7 ins. 74:31.64
- P. K. HOFFMAN (b. 1943)
152. **Fish.** Glazed stoneware.  
15¾ ins. x 16 ins. x 10 ins. 74:31.54
- 153. **Xanadu.** Glazed storage pot.  
H: 17½ ins. W: 19 ins. Circumference: 51 ins. 71:27
- PAUL HORIUCHI (b. 1906)
- 154. **Summer Breeze.** Collage. 1962.  
24 ins. x 8 ins. 73:4.10
- ROBERT HUCK (1923-1961)
- 155. **River's Edge.** Color woodcut. 1958.  
20¼ ins. x 30¼ ins. 74:31.150
- KEITH IMUS (b. 1927)
156. **Terpsichore.** Metal construction. 1963.  
H: 21 inches. 70:18.11
- WILLIAM IVEY (b. 1919)
- 157. **Blue Tablet.** Oil on canvas. 1965.  
71½ ins. x 35½ ins. 66:26.2
- MANUEL IZQUIERDO (b. 1925)
158. **Majorette's Head.** Chalk on paper. 1962.  
24 ins. x 18 1/16 ins. 71:4.32
159. **Ermine Furs [20].** Graphite on paper. 1966.  
11 ins. x 8½ ins. 74:31.142
- 160. **Acrobats.** Brush and ink on paper. 1967.  
38 ins. x 25 ins. 74:31.147
161. **Bride #1.** Charcoal on paper. 1967.  
38 ins. x 25 ins. 74:31.148



- 153.  
P. K. HOFFMAN (b. 1943)  
**Xanadu.** Glazed storage pot.  
H: 17½ ins. W: 19 ins. Circumference: 51 ins. 71:27

- |                           |  |           |
|---------------------------|--|-----------|
| 162.                      | <b>Bride #2.</b> Pencil on paper. 1967.<br>38 ins. x 25 ins.                               | 74:31.149 |
| 163.                      | <b>Landscape #2.</b> Ink and brush on paper. 1967.<br>12 ins. x 18 ins.                    | 74:31.143 |
| 164.                      | <b>Plant-Cross 15.</b> Brush and ink on paper. 1967.<br>6 ins. x 14 1/4 ins.               | 74:31.145 |
| 165.                      | <b>Shepherd.</b> Terra cotta sculpture. 1962.<br>H: 18 inches.                             | 70:18.12  |
| 166.                      | <b>Studies--12.</b> Pencil on paper. 1967.<br>5 1/2 ins. x 8 7/8 ins.                      | 74:31.146 |
| 167.                      | <b>Untitled Sculpture Study.</b> Pastel crayon on board.<br>1967. 9 1/2 ins. x 6 1/4 ins.  | 74:31.114 |
| 168.                      | <b>Study for Sculpture [Drawing 38].</b> Ink on paper.<br>24 3/8 ins. x 21 ins.            | 74:31.141 |
| GEORGE JOHANSEN (b. 1928) |  |           |
| • 169.                    | <b>Jungle Gym &amp; Teeter Totter.</b> Color woodcut.<br>1952. (Ed. 2/7) 12 ins. x 15 ins. | 74:31.57  |
| 170.                      | <b>Swimming and Diving.</b> Pen and ink on gray paper.<br>1958. 19 ins. x 19 1/4 ins.      | 70:18.13  |
| 171.                      | <b>Portrait II [of Louis Bunce].</b> Serigraph. 1963.<br>(Ed. 1/6) 13 ins. x 19 1/4 ins.   | 70:18.14  |
| 172.                      | <b>Portrait III, Jack McLarty.</b> Serigraph. 1963.<br>14 ins. x 20 ins.                   | 75:3.26   |
| 173.                      | <b>Portrait IV, Manuel Izquierdo.</b> Serigraph. 1963.<br>(Ed. 1/8) 14 1/2 ins. x 21 ins.  | 75:3.27   |
| 174.                      | <b>Magician's Screen.</b> Mixed media print. 1967.<br>(Ed. 2/16) 18 3/4 ins. x 24 1/2 ins. | 73:4.6    |

• indicates works in exhibit.

- 175. **Echo.** Mixed media print. 1968. (Ed. 2/80)  
13¾ ins. x 17 3/8 ins. 73:4.5
  
- LADISLAS KARDOS (b. 1909)
- 176. **Mainstreet in a Small World.** Oil on canvas. 1962.  
24 ins. x 29 ins. 70:18.15
  
- LEE KELLY (b. 1932)
- 177. **Sketch for a Sculpture.** Oil wash on paper. 1964.  
34 1/16 ins. x 46 ins. 71:4.33
  
- 178. **Untitled.** Nickel construction. 1964.  
H: 14½ inches. 71:4.3
  
- LEO KENNEY (b. 1925)
- 179. **The Great Angel.** Oil on canvas. 1947.  
30 ins. x 19½ ins. 74:31.12
  
- 180. **The Witness, Variation.** Watercolor. 1954.  
28 ins. x 21½ ins. 74:15
  
- 181. **The Awakening: Homage to Redon.** Tempera.  
1964. 24 ins. x 19 1/8 ins. 74:31.19
  
- 182. **Formation I.** Oil on panel. 1965.  
36 ins. x 36 ins. 71:4.21
  
- MAUDE KERNS (1876-1965)
- 183. **Composition #35.** Oil on canvas. 1944.  
30 ins. x 36 ins. 70:18.16
  
- ROLF KLEP (b. 1904)
- 184. **The Egg of Power.** Air brush on paper. 1955.  
26 ins. x 13 ins. 70:16.42
  
- 185. **Illustration from Beowulf.** Watercolor. 1941.  
10¾ ins. x 8¼ ins. 70:16.43



- 178.  
LEE KELLY (b. 1932)  
**Untitled.**  
Nickel construction. 1964.  
H: 14½ inches.  
71:4.3



- FRANCES KOCH.
186. **Days of Pomp and Glory.** Engraving.  
10 ins. x 7 5/16 ins. 72:1.8
- HANK KOWERT (b. 1924)
187. **Marsh.** Oil on canvas. 1961.  
18 ins. x 24 ins. 70:16.25
- 188. **Toward the Great Basin.** Oil on canvas. 1963.  
27 ins. x 36 ins. 74:31.7
- LAVERNE KRAUSE (b. 1924)
189. **Birds at Skidmore Fountain.** Woodcut. 1954.  
10½ ins. x 12 ins. 70:16.44
190. **Waiting.** Lithograph. 1960. (Ed. 9/12)  
18 ins. x 24 ins. 70:18.17
- 191. **The City.** Dry point. ca. 1960. (Ed. 5/20)  
14¾ ins. x 4 5/8 ins. 74:31.75
192. **Skidmore Fountain.** Lithograph. 1964.  
11¾ ins. x 8 5/8 ins. 74:31.74
193. **Northwest View [proof].** Color etching. n.d.  
3 ins. x 3 ins. 74:31.76
194. **Steel Bridge.** Ink drawing. ca. 1960.  
33 ins. x 24½ ins. 71:4.12
- BETTY LADUKE (b. 1933)
195. **Clown Trilogy.** Etching. 1972. (Ed. 8/40)  
12 3/8 ins. x 12 ins. 74:31.83
- 196. **Love's Journey.** Color intaglio. 1973. (Ed. 8/12)  
19 7/8 ins. x 24 15/16 ins. 74:20
- BRUNO LAVERDIERE (b. 1937)
197. **Chalice Cup with Blue Face.** Glazed terra cotta  
ware. ca. 1965. H: 8 ins. Diameter: 4¾ ins. 74:31.46

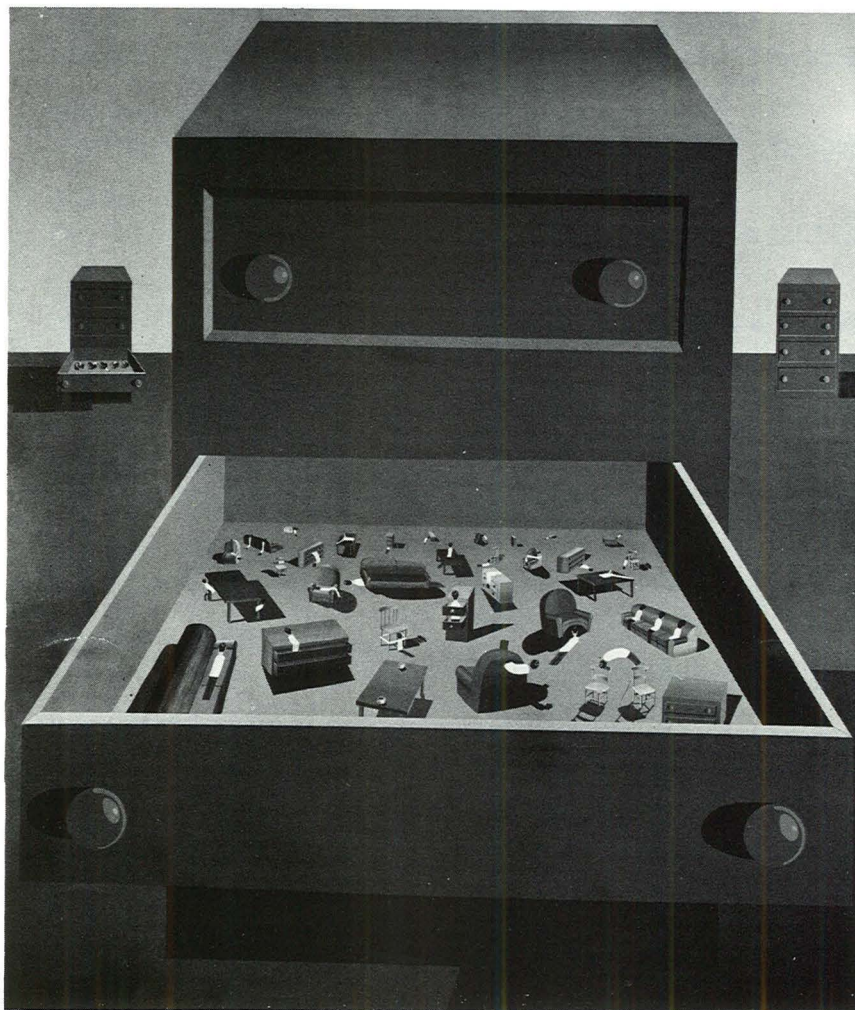
• indicates works in exhibit.

- 191.  
LAVERNE KRAUSE (b. 1924)  
**The City.**  
Dry point. ca. 1960. (Ed. 5/20).  
14¾ ins. x 4 5/8 ins.  
74:31.75



- NORMAN LANE (b. 1931)
198. **Ice Mountain.** Oil wash on composition board.  
1957. 29¾ ins. x 19¾ ins. 72:1.39
199. **Deep Woods Dance.** Oil wash on paper. 1966.  
22¼ ins. x 30 ins. 71:4.28
200. **Artifact.** Oil wash on paper. 1968.  
24 ins. x 18 ins. 74.31.9
- MIKE LAWSON (b. 1944)
- 201. **Adresser I.** Oil on masonite. 1967.  
49 ins. x 42¾ ins. 74:31.15
- FREDERIC LITTMAN (b. 1907)
- 202. **Of My Gentle Friend.** Cast bronze. 1961.  
H: 45 inches. 70:16.1
203. **Chinoiserie #1.** Cast and welded bronze. 1962.  
H: 34 inches. 70:16.1
- RICHARD LOLCOMA (b. 1936)
204. **Bottle.** Glazed stoneware.  
H: 15 inches. Diameter: 4½ inches. 74:31.42
205. **Ceramic Footed Vase.** Glazed terra cotta ware.  
H: 9 inches. Diameter: 4½ inches. 74:31.47
- 206. **Vase with Blue Glaze.** Glazed terra cotta ware.  
H: 23½ ins., Diameter: 7½ ins. 74:31.40
- JAMES MARTIN (b. 1928)
207. **Dream of Sore Corns and the Angel of Bunions.**  
Tempera. 1963. 15½ ins. x 17 ins. 70:16.47
208. **Untitled Figure Composition.** Tempera.  
10¼ ins. x 11 1/8 ins. 74:31.156





- 201.  
 MIKE LAWSON (b. 1944)  
**Adresser I.** Oil on masonite. 1967.  
 49 ins. x 42¾ ins.  
 74:31.15



- PHILIP McCracken (b. 1928)
- 235. **Armoured Bird.** Wood and metal. 1963.  
H: 10½ inches. 75:3.21
  - 236. **Healed Up Sky.** Mixed media sculpture. 1967.  
46¼ ins. x 78½ ins. x 5½ ins. 74:31.65
- JAMES McGARRELL (b. 1930)
- 237. **Hillcap Bathers.** Oil on masonite. 1959.  
42 ins. x 47½ ins. 70:16.30
  - 238. **Portland II.** Lithograph. ca. 1950. (Ed. 1.1/20)  
34¾ ins. x 27¼ ins. 74:31.151
  - 239. **Untitled.** Pencil on paper.  
16 ins. x 20 ins. 70:16.21
- JACK McLARTY (b. 1919)
- 240. **Self Portrait with the River.** Oil on canvas. 1945.  
12 ins. x 26 ins. 70:18.30
  - 241. **The War Years.** Oil on canvas. 1945.  
25 ins. x 36 ins. 74:31.6
  - 242. **Merry-Go-Round.** Pen and ink on paper 1954.  
11¼ ins. x 10 ins. 70:16.46
  - 243. **Ship of Fools.** Ink on paper. pre-1958.  
17½ ins. x 22½ ins. 72:1.18
  - 244. **Voyage of the Neon Horse.** Oil on canvas. 1958.  
36½ ins. x 60½ ins. 70:16.16
  - 245. **Fallen Lovers.** Gouache. ca. 1960.  
30 ins. x 18¾ ins. 74:31.98
  - 246. **Fallen Lovers.** Oil on canvas. 1960.  
67½ ins. x 42 ins. 70:18.20

- 247.      **The Light.** Oil on canvas. 1960.  
45 ins. x 33 ins. 74:31.17
- 248.      **Player in White.** Oil on canvas. 1961-62.  
22 ins. x 18 ins. 70:16.22
- 249.      **Over and Out.** Aquatint. 1963.  
5 5/8 ins. x 4 1/8 ins. 72:1.11
- 250.      **Barbara [proof].** Woodcut. 1964.  
4 11/16 ins. x 3 7/8 ins. 72:1.13
- 251.      **Floater [proof].** Aquatint. 1964.  
5 5/8 ins. x 8 3/4 ins. 72:1.14
- 252.      **Untitled, Fantasy: ["The World Jumper"].**  
Oil on board. 1964. 16 ins. x 12 ins. 74:31.35
- 253.      **Emerging Woman.** Woodcut. 1966.  
20 ins. x 14 ins. 72:1.43
- 254.      **17 Love Poems.** Bound book with woodcuts. 1966.  
(Ed. 2/100)  
8 1/4 ins. x 8 1/2 ins. 74:31.159
- 255.      **Streaming Away.** Oil on canvas. 1966.  
42 ins. x 66 ins. 72:1.37
- 256.      **Evening Dream.** Color woodcut. 1968.  
8 1/4 ins. x 4 3/4 ins. 74:31.38
- 257.      **Secret Mind.** Woodcut. 1968. (Ed. 7/40)  
12 1/4 ins. x 9 ins. 74:31.62
- 258.      **The Body of the Dreamer.** Color woodcut.  
ca. 1970. Diameter: 9 3/4 inches. 74:31.81
- 259.      **The Beach.** Ink on paper. n.d.  
8 1/2 ins. x 11 ins. 72:1.15



- 247.  
JACK McLARTY  
**The Light.**  
Oil on Canvas. 1960.  
74:31.17

260. **Black Coat.** Aquatint. n.d.  
1 11/16 ins. x 1 3/4 ins. 72:1.10
261. **Figures in the Park.** Ink and watercolor. n.d.  
11 1/4 ins. x 20 1/8 ins. 72:1.17
262. **Figures in the Park** Watercolor. n.d.  
13 7/8 ins. x 16 3/4 ins. 72:1.16
263. **Flutist.** Etching. n.d.  
1 7/8 ins. x 2 ins. 72:1.12
264. **Sketches for painting, "Voyage of the Neon Horse".**  
Pencil on paper. 1958. 8 1/2 ins. x 11 ins. 70:16.28 a-f
- STEVE McLEOD (b. 1945)
- 265. **An absolute Truth.** Oil on canvas. 1970.  
51 1/2 ins. x 41 1/2 ins. 74:31.192
  - 266. **Wings No. 4** Ball point pen on paper. 1971.  
11 3/4 ins. x 8 5/8 ins. 74:31.79
- HIRO MORIYASU (b. 1934)
267. **Figure with Rock.** Black and white photograph. n.d.  
10 1/8 ins. x 12 3/4 ins. 74:31.161
268. **Nude Profile with Weathered Rock.** Black and  
white photograph n.d. 13 ins. x 10 3/8 ins. 74:31.162
- 269. **Untitled Seascape.** Black and white photograph. n.d.  
13 1/4 ins. x 10 1/4 ins. 74:31.160
- CARL MORRIS (b. 1911)
270. **Land, Sea, and Sky.** Oil on canvas. 1956.  
40 ins. x 48 ins. 70:16.6
- 271. **Lifting Horizon.** Oil on canvas. 1961.  
72 ins. x 46 ins. 70:16.5



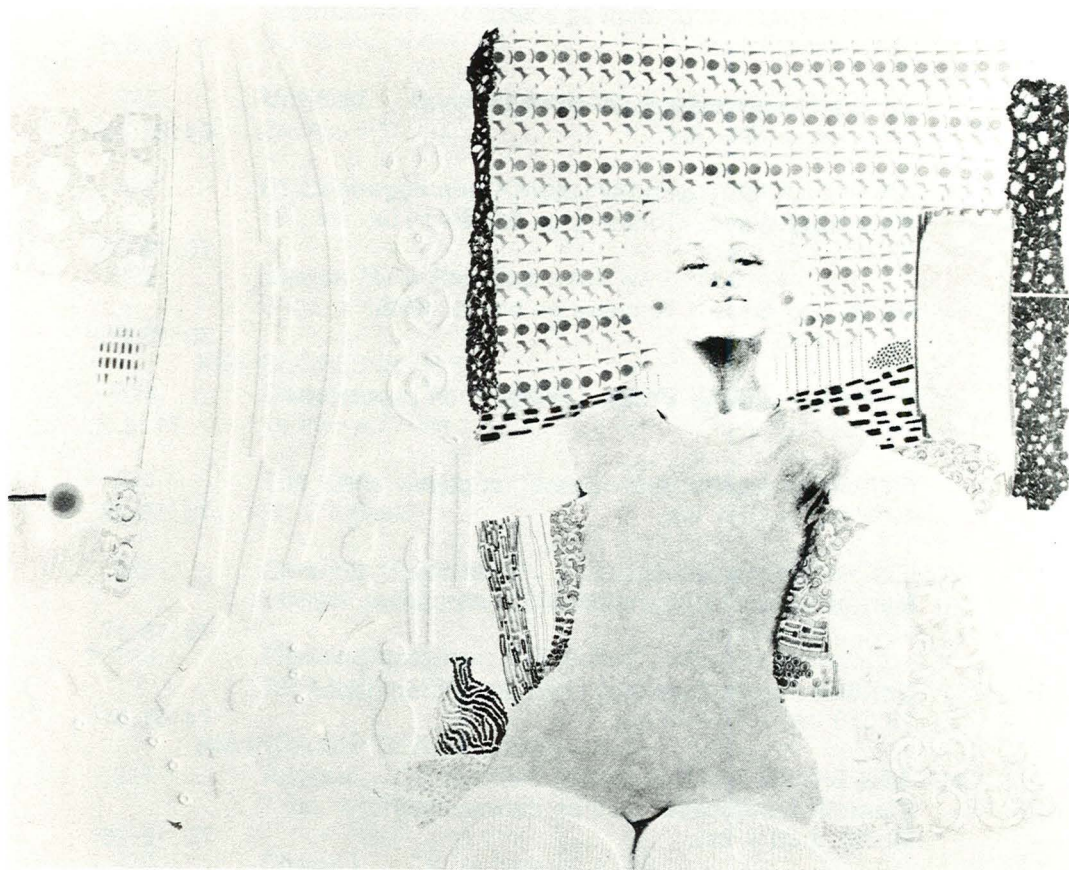
- |                          |  |           |
|--------------------------|--|-----------|
| 272.                     | <b>Untitled.</b> Watercolor. n.d.<br>8¾ ins. x 11½ ins.                                      | 75:3.28   |
| HILDA MORRIS (b. 1911)   |  |           |
| • 273.                   | <b>Three Birds.</b> Etching. 1953.<br>4 11/16 ins. x 7 1/16 ins.                             | 70:16.48  |
| RICHARD MULLER (b. 1928) |  |           |
| 274.                     | <b>Sketch for a Burning Tug.</b> Oil on canvas. 1962.<br>22 ins. x 30 ins.                   | 70:16.14  |
| 275.                     | <b>Untitled Landscape.</b> Pen and ink on paper. 1962.<br>18¼ ins. x 24 ins.                 | 74:31.97  |
| 276.                     | <b>Dark and Light Landscape.</b> Ink and watercolor<br>on paper. 1963. 9 7/8 ins. x 14¾ ins. | 74:31.95  |
| 277.                     | <b>Snow Shadow.</b> Pen and ink on paper. 1968.<br>12 ins. x 15 ins.                         | 74:31.94  |
| 278.                     | <b>Terminus.</b> Watercolor. 1968.<br>12 ins. x 13 ins.                                      | 74:31.92  |
| • 279.                   | <b>Beach Warp.</b> Watercolor. 1969.<br>9 1/8 ins. x 12 ins.                                 | 74:31.93  |
| • 280.                   | <b>Black Hill Border.</b> Acrylic on linen. 1969.<br>29 ins. x 35 ins.                       | 74:31.5   |
| 281.                     | <b>Field and Forest.</b> Pen and ink on paper. 1969.<br>18 ins. x 23 1/8 ins.                | 74:31.4   |
| 282.                     | <b>Glen.</b> Ink and charcoal on paper. 1969.<br>18¼ ins. x 24 1/16 ins.                     | 74:31.100 |
| 283.                     | <b>Untitled [landscape].</b> Brown ink on paper. n.d.<br>18¼ ins. x 24 ins.                  | 74:31.96  |



- RON MYRON.
284. **Portrait of Morris Graves.** Hand-colored photograph.  
16 ins. x 17 ins. 74:31.27
- ERIC NORSTAD (b. 1925)
- 285. **Ceramic Pot with Lid.** Glazed terra cotta ware. 1963.  
H: 20½ inches. Diameter: 17½ inches. 74:31.69
- MR. OTIS (Stewart Holbrook) (b. 1893)
286. **Willamette Venus.** Oil on canvas board. 1953. 75:10
- HENK PANDER & JOHN LAURSEN
287. **Views of Mt. Hood.** Bound book of drawings. 1971.  
10 ins. x 14 ins. 74:31.158
- ALBERT PATECKY (b. 1906)
288. **Backstage.** Oil on paper. 1953.  
15 ins. x 12 ins. 74:31.22
- PEHR (HALSTEN) (1897-1965)
289. **Strange Land.** Tempera. 1956.  
16 ins. x 8½ ins. 70:16.49
- 290. **Mountain Majesty.** Gouache on paper. 1957.  
13 1/8 ins. x 11 ins. 74:31.55
- JOSEPH PETTA, JR. (b. 1936)
- 291. **The Vigil.** Collage and acrylic on wood panel. 1965.  
16 ins. x 12 7/8 ins. 71:4.27
- MANOLIS PILADAKIS (b. 1927)
292. **Coastal Bluff.** Watercolor. 1960.  
28 ins. x 19½ ins. 70:18.22
293. **Tree.** Color woodcut. 1963. (Ed. of 8)  
19¼ ins. x 29¾ ins. 74:31.14
294. **Untitled.** Collage. 1963.  
19 11/16 ins. x 27¼ ins. 71:4.25

295. **Surface No. 1.** Color woodcut. (Ed. of 8) 1964.  
25½ ins. x 22 3/8 ins. 74:31.153
296. **Surface No. 29.** Oil on canvas with plaster relief.  
1965. 75 ins. x 67 ins. 72:1.40
297. **Coastal Theme.** Woodcut.  
24 ins. x 31 ins. 70:16.13
- C. S. PRICE (1874-1950)
298. **Figures and Boats.** Oil on composition board. 1938.  
16 ins. x 20 ins. 70:16.7
- 299. **Front Street Building.** Oil on masonite. 1948.  
17¾ ins. x 24 ins. 70:16.8
- RUBY RALSTON (b. 1929)
300. **The Awakening.** Cast lead. 1963.  
6 ins. x 6 ins. 74:31.63
- JOHN ROCK (b. 1919)
- 301. **Interior.** Pencil on paper. 1967.  
19 ins. x 24 ins. 72:1.44
302. **Fog, Moonlight, and Cove.** Lithograph. (Ed. 7/10)  
18 ins. x 23½ ins. 74:31.91
- 303. **Resting Model.** Color Lithograph. (Ed. 7/10)  
23 ins. x 15¾ ins. 74:31.90
- JOHN ROCK & JOHN HAISLIP
304. **Elegy for Jake.** Printed poems and lithographs  
in folio. 1965. 15 ins. x 11 ins. 74:31.157
- ALBERT C. RUNQUIST (1894-1974)
305. **Storm Mountain.** Oil on masonite. 1953.  
16 ins. x 20 ins. 70:16.24
306. **Twin Fawns.** Oil. 1953.  
19 7/16 ins. x 15½ ins. 70:16.23

• indicates works in exhibit.



- 301.  
JOHN ROCK (b. 1919)  
**Interior.** Pencil on paper. 1967.  
19 ins. x 24 ins.  
72:1.44

- 307.      **The Source.** Oil on canvas board.  
19½ ins. x 13 ins. 75:3.6
  
- 308.      **Untitled Landscape.** Oil on paper. n.d.  
15¼ ins. x 19¼ ins. 74:31.10
  
- ARTHUR RUNQUIST (1891-1971)
- 309.      **Assembly Ways.** Tempera on board. 1944.  
16 ins. x 21 ins. 70:18.24
  
- 310.      **North End Bays.** Tempera on board. 1946.  
16 ins. x 21 ins. 70:18.25
  
- 311.      **When the Glomer Broke.** Tempera on paper. 1946.  
16 ins. x 20 ins. 71:4.2
  
- 312.      **Fisherman by the Sea.** Casein on paper. 1952.  
19¼ ins. x 15¾ ins. 70:18.23
  
- MICHELE RUSSO (b. 1909)
- 313.      **Men of Special Dimensions.** Oil on canvas. 1961.  
40½ ins. x 68 ins. 70:16.17
  
- 314.      **Untitled Figure Drawing.** Pen and ink on paper.  
13 3/8 ins. x 10 1/8 ins. 74:31.61
  
- CHARLES BRYAN RYAN (b. 1910)
- 315.      **Klamath Landscape.** Oil on canvas. 1961.  
22 ins. x 30¼ ins. 70:16.26
  
- NANCY NALDER SCHILDT
- 316.      **Owl.** Felt pen on paper. 1960.  
14 13/16 ins. x 10¾ ins. 72:1.2
  
- 317.      **Untitled.** Tempera on composition board. 1964.  
7 15/16 ins. x 10 ins. 72:1.3
  
- 318.      **Figure Study.** Etching.  
10 9/16 ins. x 7 5/16 ins. 72:1.5

• indicates works in exhibit.



319. **Motherhood.** Engraving.  
6 1/8 ins. x 4 3/4 ins. 72:1.4
320. **Untitled.** Brush and ink on paper. n.d.  
24 ins. x 18 ins. 74:31.86
321. **Of Cabbages and Kings.** Etching. n.d.  
8 3/4 ins. x 10 7/8 ins. 72:1.6
322. **Sketch for a Painting.** Ink wash on paper. n.d.  
9 ins. x 12 ins. 72:1.1
- KEN SHORES (b. 1928)
323. **Cloisters.** Terra cotta sculpture. 1963.  
16 ins. x 27 ins. 70:18.27
324. **The Little House.** Terra cotta sculpture. 1963.  
H: 8 inches. 70:18.26
325. **Ceramic "Face Mug".** Glazed stoneware.  
5 3/4 ins. x 5 1/2 ins. x 3 3/4 ins. 74:31.45
- 326. **Flower Container: "Fish Pot".** Glazed stoneware.  
22 1/2 ins. x 12 1/2 ins. 74:31.43
- AMANDA SNYDER (b. 1894)
327. **Apples.** Oil on board. 1940.  
7 ins. x 9 1/2 ins. 74:31.34
328. **Circus I.** Oil on canvas. 1948.  
22 ins. x 28 ins. 74:31.193
329. **Emmett Kelly.** Ink and brush on paper. ca. 1955.  
16 7/8 ins. x 13 3/4 ins. 74:31.25
330. **Horses of C.S. Price.** Linocut. 1960.  
13 ins. x 16 1/4 ins. 74:31.60
331. **Clowning Self Portrait.** Oil on masonite. ca. 1959.  
21 1/4 ins. x 17 3/8 ins. 70:16.20

• indicates works in exhibit.

- |                           |   |          |
|---------------------------|---|----------|
| 332.                      | <b>Doll.</b> Encaustic on wood panel. n.d.<br>20 ins. x 15 ins.                               | 74:31.24 |
| 333.                      | <b>Mother of Amanda Snyder.</b> Charcoal on paper.<br>ca. 1959. 16 7/8 ins. x 13 7/8 ins.     | 72:1.30  |
| 334.                      | <b>Portrait of Charles Heaney.</b> Charcoal on paper.<br>ca. 1958. 15 7/8 ins. x 12 ins.      | 72:1.32  |
| 335.                      | <b>Portrait of Jack McLarty.</b> Ink and brush on paper.<br>ca. 1957. 17 ins. x 13 7/8 ins.   | 72:1.33  |
| • 336.                    | <b>Portrait of LaVerne Krause.</b> Ink and brush on paper.<br>ca. 1957. 17 ins. x 13 7/8 ins. | 72:1.34  |
| 337.                      | <b>Portrait of Louis Bunce.</b> Ink on newsprint.<br>ca. 1957. 11 ins. x 8½ ins.              | 72:1.31  |
| 338.                      | <b>Self Portrait.</b> Ink and brush on paper. ca. 1959.<br>17 ins. x 14 ins.                  | 72:1.35  |
| ROBERT SPERRY (b. 1927)   |   |          |
| 339.                      | <b>Sculptural Form.</b> Terra cotta sculpture. 1959.<br>H: 27½ ins. Diameter: 5¾ ins.         | 71:4.10  |
| 340.                      | <b>Ceramic Weed Pot.</b> Glazed stoneware. 1962.<br>11¾ ins. x 11 ins. x 5½ ins.              | 74:31.48 |
| • 341.                    | <b>Bell-type Jar with Lid.</b> Wheel-thrown pottery.<br>H: 19 ins. Diameter: 9¾ ins.          | 71:4.8   |
| 342.                      | <b>Female Form.</b> Terra cotta sculpture.<br>H: 18 ins. W (greatest): 9¼ ins.                | 71:4.9   |
| MARK SPONENBURG (b. 1916) |   |          |
| • 343.                    | <b>Repose.</b> Granite. 1964.<br>H: 10½ inches.   | 74:31.21 |

• indicates works in exhibit.

- JAY STEENSMA (b. 1941)
344. **Marsh Frog.** Watercolor. 1963.  
9¾ ins. x 9 11/16 ins. 72:1.7
- MARK TOBEY (b. 1890)
345. **Girl.** Tempera on board. 1960.  
5½ ins. x 4½ ins. 75:3.5
- 346. **Sun in the Park.** Mixed media painting. 1965.  
12 1/8 ins. x 9 3/8 ins. 75:3.9
347. **Chinese Calligraphy.** Tempera on composition board.  
26 7/8 ins. x 10¼ ins. 70:16.11
348. **Drawing of a Girl.** Crayon on paper.  
16 ins. x 12 ins. 71:4.19
- CLAIRE TROTTER (b. 1913)
- 349. **View of Obsidian Cliff [Oregon Cascades].**  
Black and white photograph. 1967.  
7 ins. x 9½ ins. 74:31.181
350. **Leaf Skeleton and Shadow.** Black and white  
photograph. 1968. 9 5/8 ins. x 5¼ ins. 74:31.182
351. **Thistledown.** Black and White photograph. 1968.  
7¾ ins. x 9¾ ins. 74:31.180
352. **Dunes Pool.** Black and white photograph.  
7 3/16 ins. x 9 11/16 ins. 74:31.172
353. **4 Untitled Photographs.** Black and white  
photographs. Measurements vary. 75:3.16-19
354. **Sand Dunes Near Florence.** Black and white  
photograph. 7 3/16 ins. x 9 5/8 ins. 74:31.183
355. **Sand Dunes I.** Black and white photograph.  
9¼ ins. x 7½ ins. 74:31.173

• indicates works in exhibit.

356. **Sand Dunes II.** Black and white photograph.  
7 1/8 ins. x 9 5/8 ins. 74:31.174
357. **Sun on Ice Crystals I.** Black and white photograph.  
7 1/4 ins. x 9 5/8 ins. 74:31.177
358. **Untitled [Sun on Ice Crystals II].** Black and white  
photograph. 7 3/8 ins. x 9 3/8 ins. 74:31.178
359. **6 Framed, Untitled Photographs.** Black and white  
photographs. Measurements vary. 75:3.10-15
360. **Thistle-Down.** Black and white photograph.  
2 11/16 ins. x 6 3/8 ins. 74:31.175
361. **Untitled [Grass with Dew].** Black and white  
photograph. 9 5/8 ins. x 7 1/2 ins. 74:31.176
363. **Untitled [Rocks in Sun].** Black and white photograph.  
9 9/16 ins. x 6 11/16 ins. 74:31.179
- SISTER PAULA MARY TURNBULL (b. 1921)
363. **Downward-Pointing Muse.** Marble. 1965.  
10 1/4 ins. x 12 ins. 74:31.53
- SHERRILL VAN COTT (1913-1942)
364. **Weeping Girl.** Tempera on paper. n.d.  
19 1/2 ins. x 15 ins. 73:4.4
- FRANCES VAN HEVELINGEN (b. 1916)
- 365. **Still Life.** Encaustic on paper. 1955.  
32 9/16 ins. x 23 1/2 ins. 70:16.50
- CHARLES VOORHIES (1901-1970)
- 366. **Foothills.** Oil on canvas. 1955.  
17 ins. x 33 1/2 ins. 70:16.71
- JAMES WASHINGTON (b. 1909)
367. **Torso with Bird.** Stone. 1962.  
H: 16 1/2 ins. Diameter: 12 ins. 71:4.17

• indicates works in exhibit.



- 368.      **Chief Little Thunder.** Granite. 1965.  
9 ins. x 9 ins. x 6 ins. 74:31.68
  
- WESLEY WEHR (b. 1929)
- 369.      **Sentinal Bird.** Ink on paper. 1956.  
5 1/16 ins. x 5 1/4 ins. 72:1.9
  
- 370.      **Night Journey.** Mixed media painting. 1965.  
7 5/8 ins. x 9 1/2 ins. 74:31.37
  
- 371.      **Quartet: Skagit I, Skagit II, Skagit III, and Willapa.**  
Mixed media painting. Measurements vary. 74:31.31
  
- HARRY WIDMAN (b. 1929)
- 372.      **River Wall.** Watercolor. 1958.  
14 3/4 ins. x 20 1/2 ins. 70:18.28
  
- DONALD WILSON (b. 1934)
- 373.      **Untitled Figure Study.** Ink, pencil and wash  
on paper. 8 1/2 ins. x 5 1/2 ins. 74:31.154
  
- MILTON WILSON (b. 1923)
- 374.      **Still Life with Fruit.** Oil on canvas.  
30 ins. x 24 ins. 70:16.9
  
- VERNON WITHAM (b. 1925)
- 375.      **Under the Pier.** Oil on masonite. 1959.  
18 ins. x 24 ins. 70:16.52
  
- JAN ZACH (b. 1914)
- 376.      **Three Forms.** Charcoal on paper. 1956.  
23 3/4 ins. x 17 3/16 ins. 70:16.53
  
- 377.      **Three Standing Forms.** Cast aluminum. 1956.  
H: 36 inches. 70:18.29
  
- DAVID ZEIGLER
- 378.      **Portrait of Kenneth Callahan.** Black and white  
photograph. 1965. 13 7/8 ins. x 10 5/8 ins. 71:4.35

• indicates works in exhibit.

379. POSTER  
**Mann und Madchen.** Reproduction of Gerhard Marcks woodcut. 1960. 22 5/8 ins. x 16 ins. 74:31.101
380. POSTER  
**Everybody Needs Mother Earth.** Photo-offset reproduction. 1970. 27 ins. x 16 ins. 74:31.102
381. POSTER  
**Exhibition at Plumtree Gallery.** Photo-offset reproduction of work by Maury Haseltine. 22 ins. x 17 ins. 74:31.103
382. POSTER  
**For Meier & Frank, Portland.** Photo-offset reproduction of ink drawing by Dennis Adler. 1968. 25 7/8 ins. x 19 3/4 ins. 74:31.104
383. POSTER  
**Magic Fern.** Shazam Society. Commercial offset printing. 22 3/4 ins. x 10 1/2 ins. 74:31.105
384. POSTER  
**The West Coast Natural Gas.** Shazam Society. Reproduction of work by C. L. Heald. 23 ins. x 14 ins. 74:31.106
385. POSTER  
**The P.H. Phactor Electric Jug Band.** Photo-offset reproduction of collage painting. 24 1/8 ins. x 16 ins. 74:31.107
386. POSTER  
**The Time Machine '67.** Photo-offset reproduction of C. L. Heald charcoal drawing. 17 1/2 ins. x 23 ins. 74:31.108
387. POSTER  
**Current Editions/Holiday Collection** Photo-offset reproduction. 22 1/2 ins. x 17 1/2 ins. 74:31.109

• indicates works in exhibit.

388. POSTER  
**For Second Annual Exhibition.** Shazam Society.  
 Photo-silkscreen reproduction.  
 27½ ins. x 17½ ins. 74:31.110
389. POSTER  
**Cube Series.** A. Holt/Jonn Geise. Photo-offset  
 reproduction. 26 ins. x 20 ins. 74:31.111
390. POSTER  
**Infinity Gallery: Exhibition of Mary Randlett/Audrey  
 Meyer design.** Photo-offset reproduction.  
 11 3/8 ins. x 17 ins. 74:31.113
391. POSTER  
**From Before Columbus to the Present.**  
 Eunice Jensen serigraph. 1970.  
 14¾ ins. x 14¾ ins. 74:31.114
392. POSTER  
**Reproduction of ink drawing by John Lawrence.**  
 22½ ins. x 16 ins. 74:31.115
393. POSTER  
**Photo-offset reproduction of Tom Hardy  
 sculpture for exhibition.**  
 22 ins. x 17 1/8 ins. 74:31.116

UNIVERSITY OF OREGON MUSEUM OF ART  
Professional Staff

Administration

Richard C. Paulin, Director  
Norine Arens, Director's Secretary  
Richard Nigh, Museum Clerk

Registration

Barbara S. Zentner, Museum Registrar  
Sandy Herbert, Registrar's Assistant (Part-time)

Exhibitions and Preparation

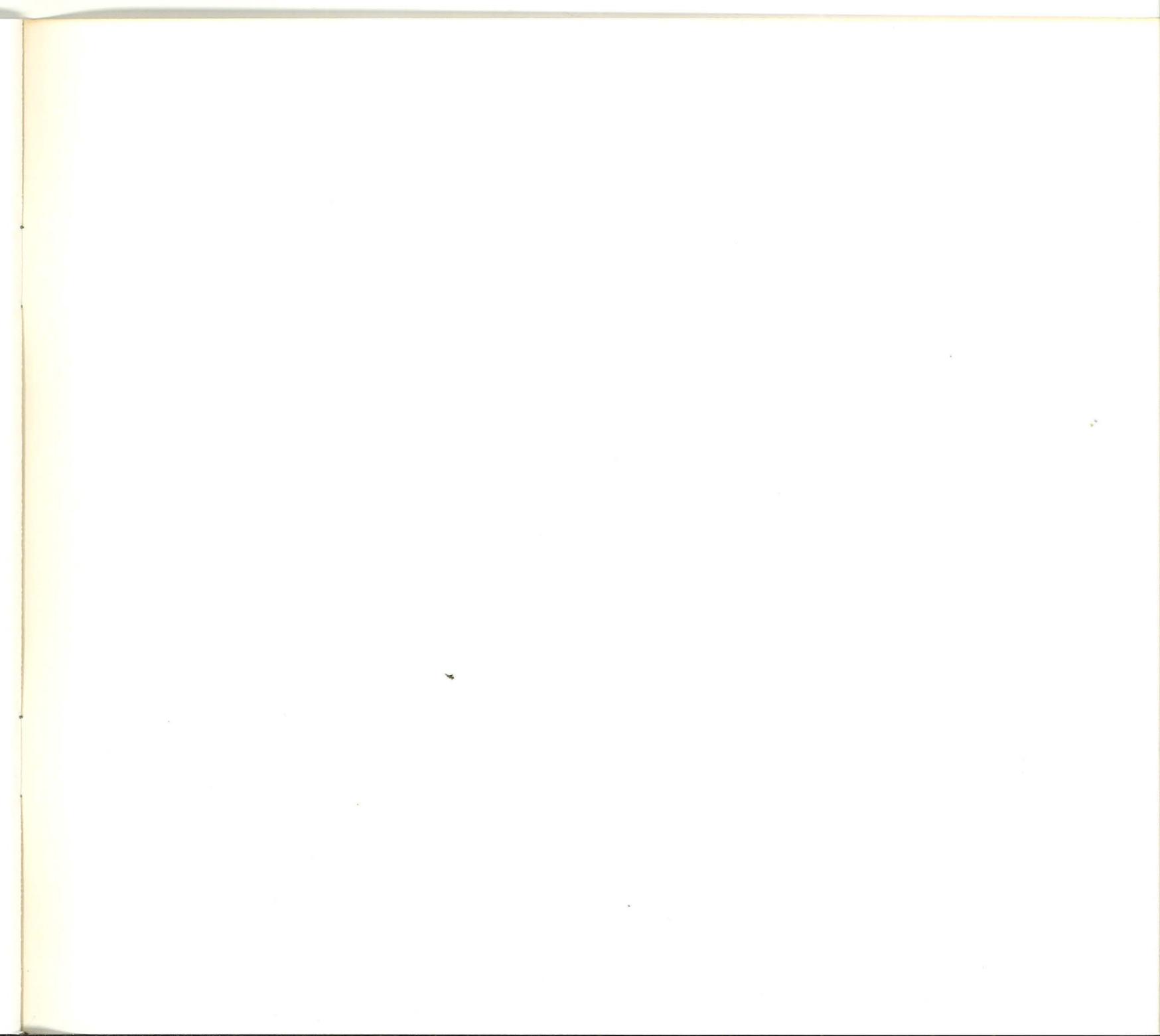
Tommy Griffin, Chief Preparator  
Kathryn Sherrer, Housekeeper  
Ken Bales, Maintenance-Repairman

Statewide Services

Michael Whitenack, Supervisor  
Lucille Johnson, Secretary (Part-time)  
Stephen Bangs, Traveling Exhibitions Coordinator

Photography by Silver Fox Studios





Cover photograph: **THE COLLECTOR** by Thom Haseltine  
catalogue list number 124